

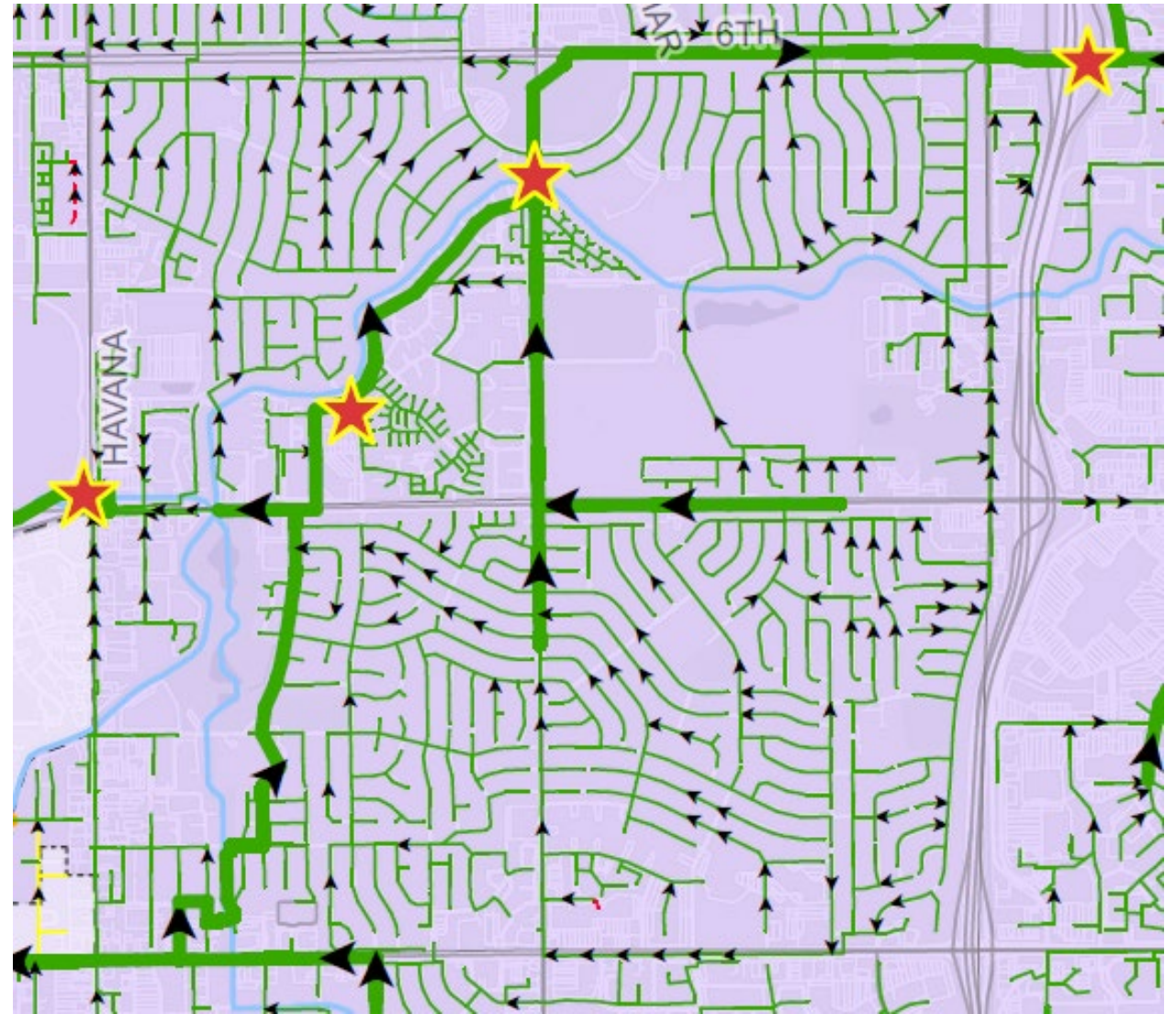
Page 10 of 10

GIS/CMMS Supervisor

ge Source: ESRI

Overview

- What is GIS?
- Software landscape
- Digital Asset Record
 - Horizontal
 - Vertical
- Networks and Models
- Mobile and Web Solutions
- What's next in GIS?





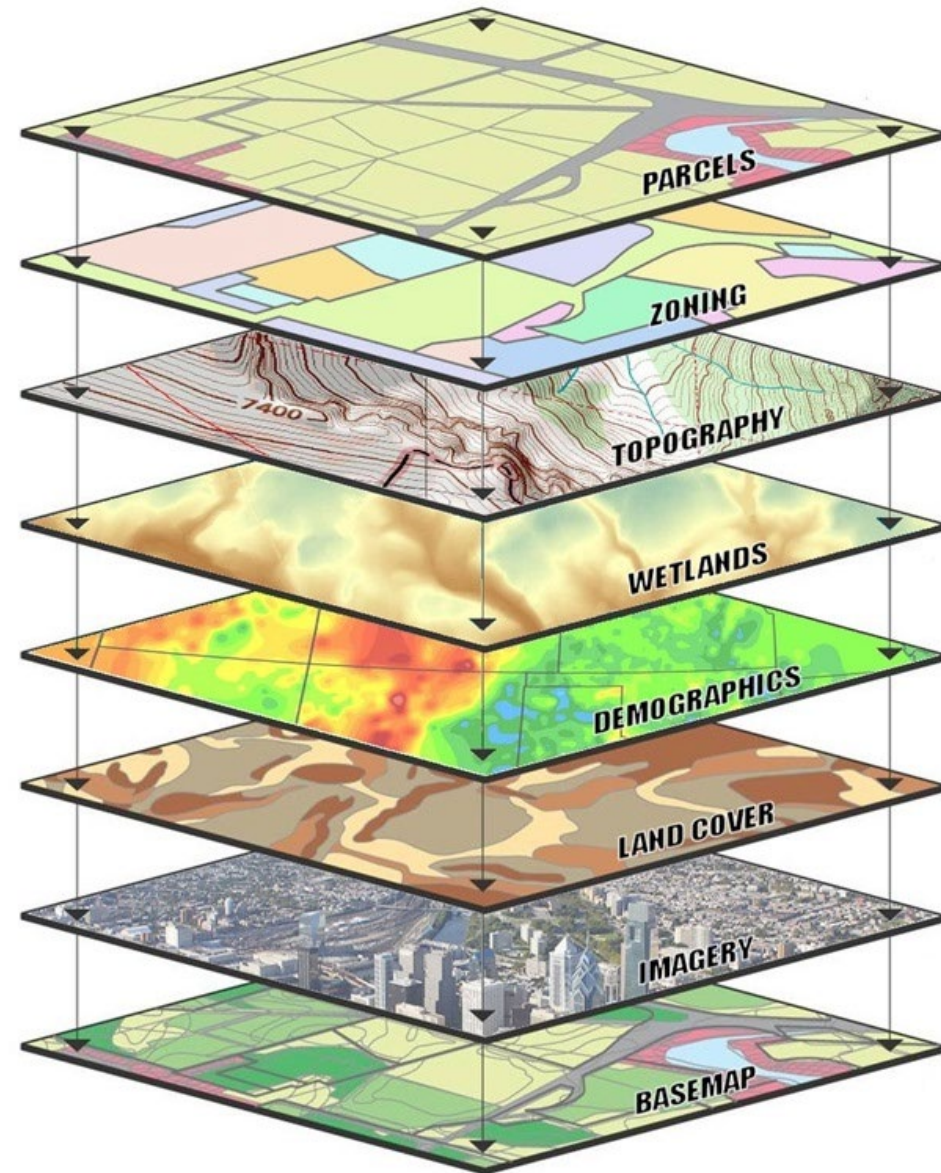
SEE PAGE - 06F



What is GIS?

GIS = Geographic Information Systems

- Adopted by utilities starting in the 90s
- Spatial database
- “Integrating location data (where things are) with all types of descriptive information (what things are like there)” - ESRI



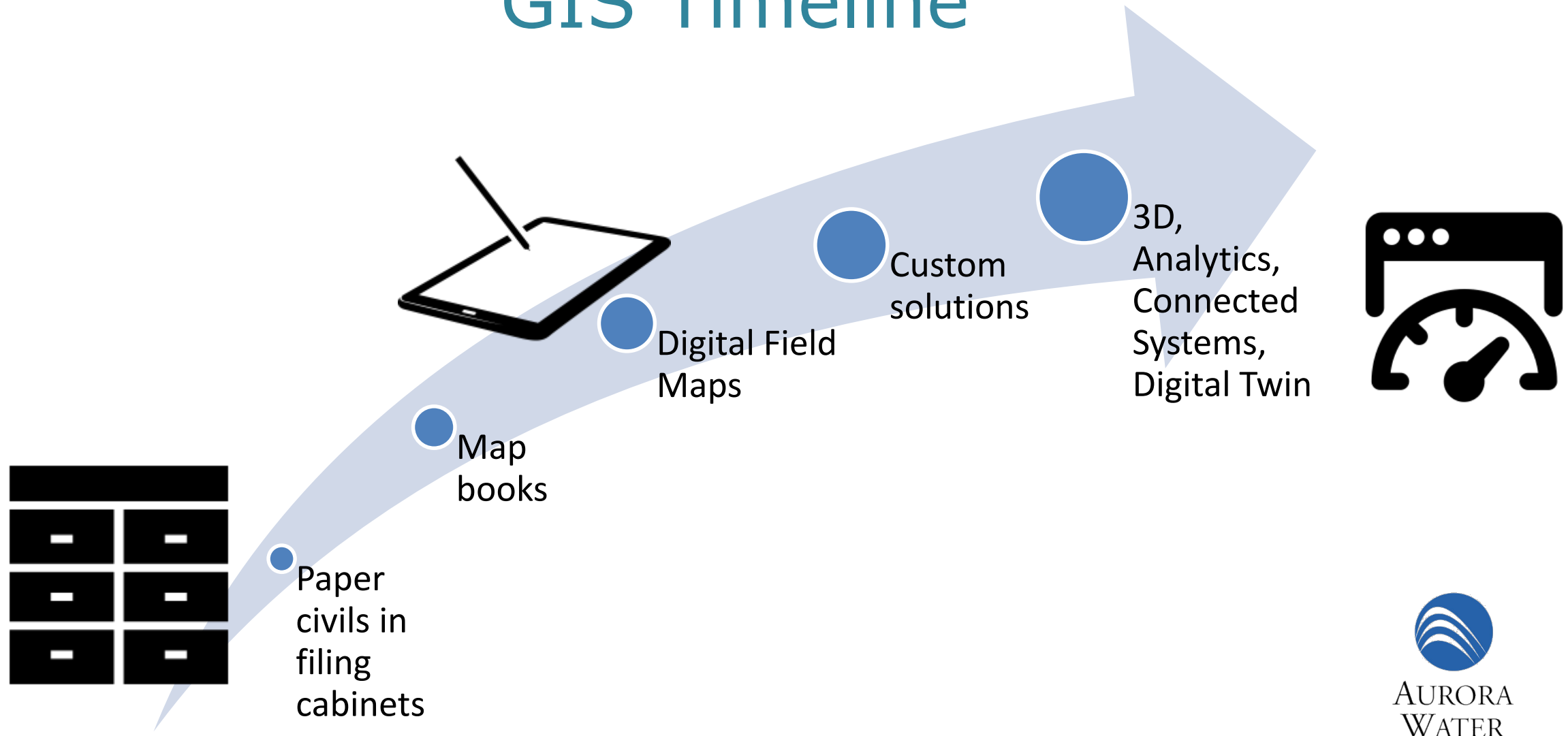
Why GIS?



- System of Record
 - Starting point for CCTV, Modeling, Asset Management, Customer Information System, and Machine Learning
- Location intelligence
- Knowledge management
- Coordination and Integration
- Engage public

Smarter decisions

GIS Timeline

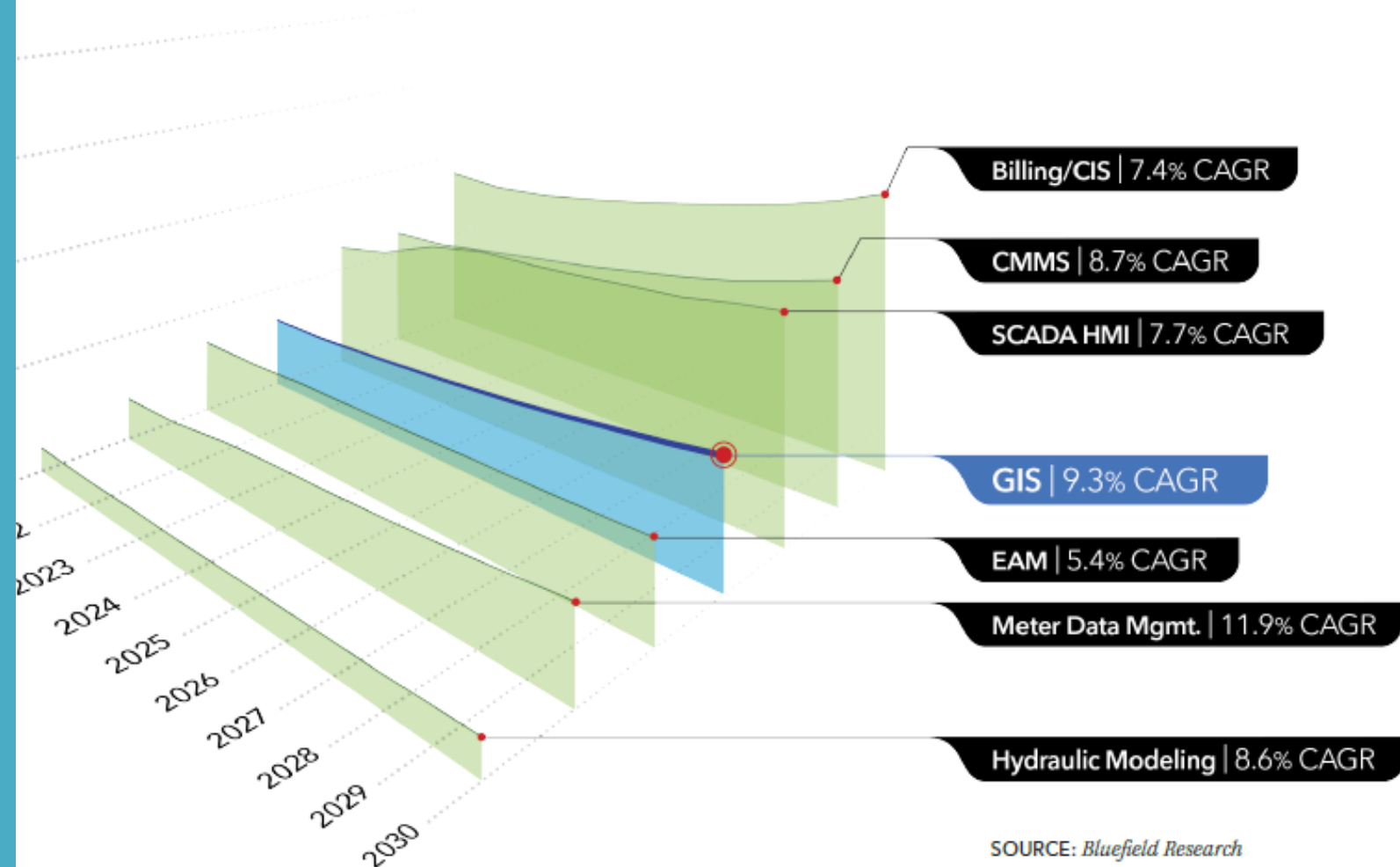


Digital Twin

“A dynamic digital representation of real-world entity(s) and their behaviors using models with static and dynamic data that enable insights and interactions to drive actionable and improved outcomes”

Smart Water Networks
Forum 2022

US UTILITIES' PROJECTED DIGITAL WATER SOFTWARE INVESTMENTS BY PRODUCT TYPE 2021-2030



SOURCE: Bluefield Research

SOFTWARE LANDSCAPE

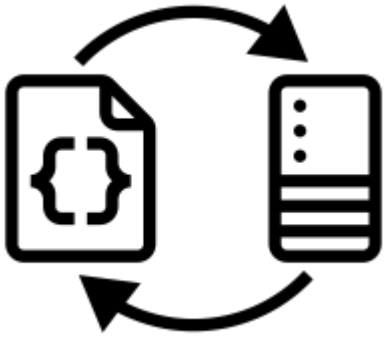




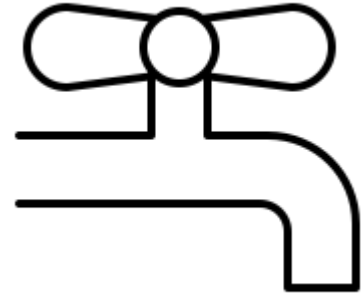
Software Landscape

- ESRI (ArcGIS, SDE)
- AutoDesk (AutoCAD, CAD, Tandem)
- Bentley (CAD)
- Open Source

Software Relationship



Vendor



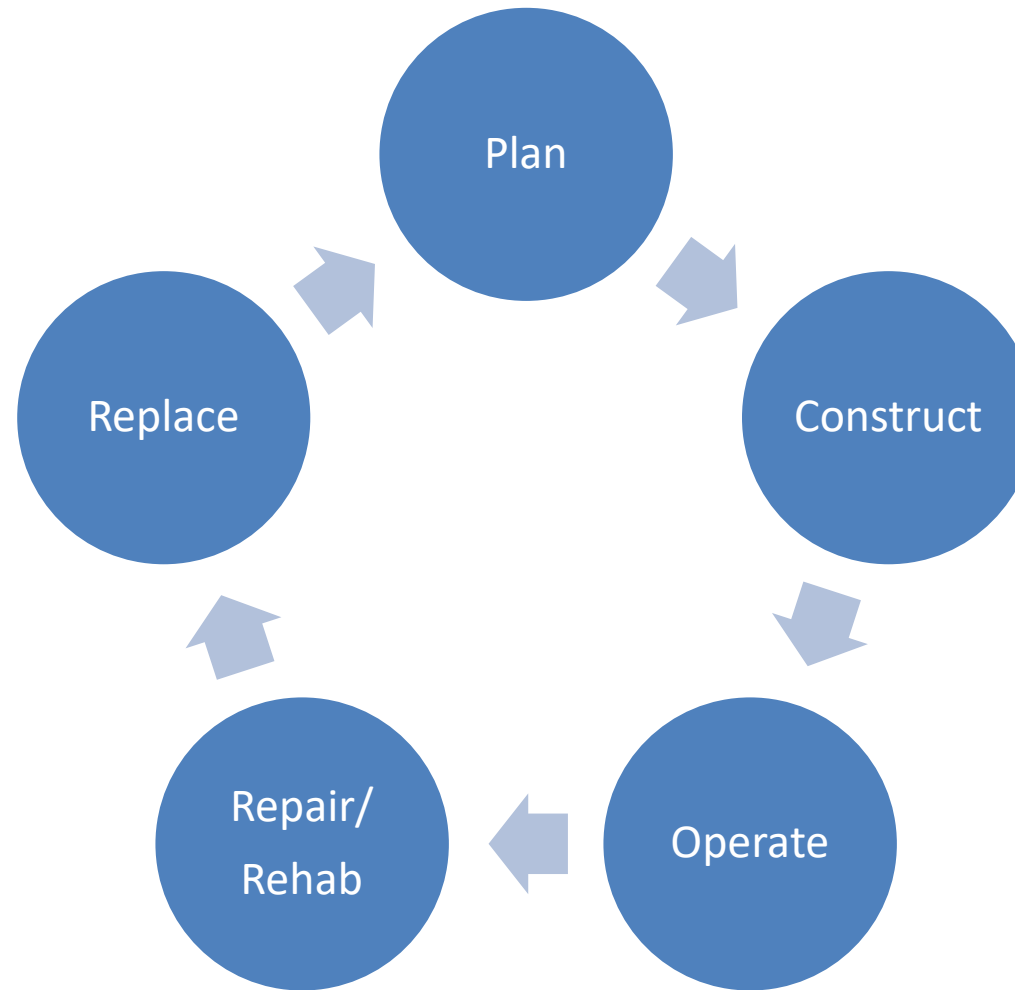
Utilities



DIGITAL ASSET RECORD



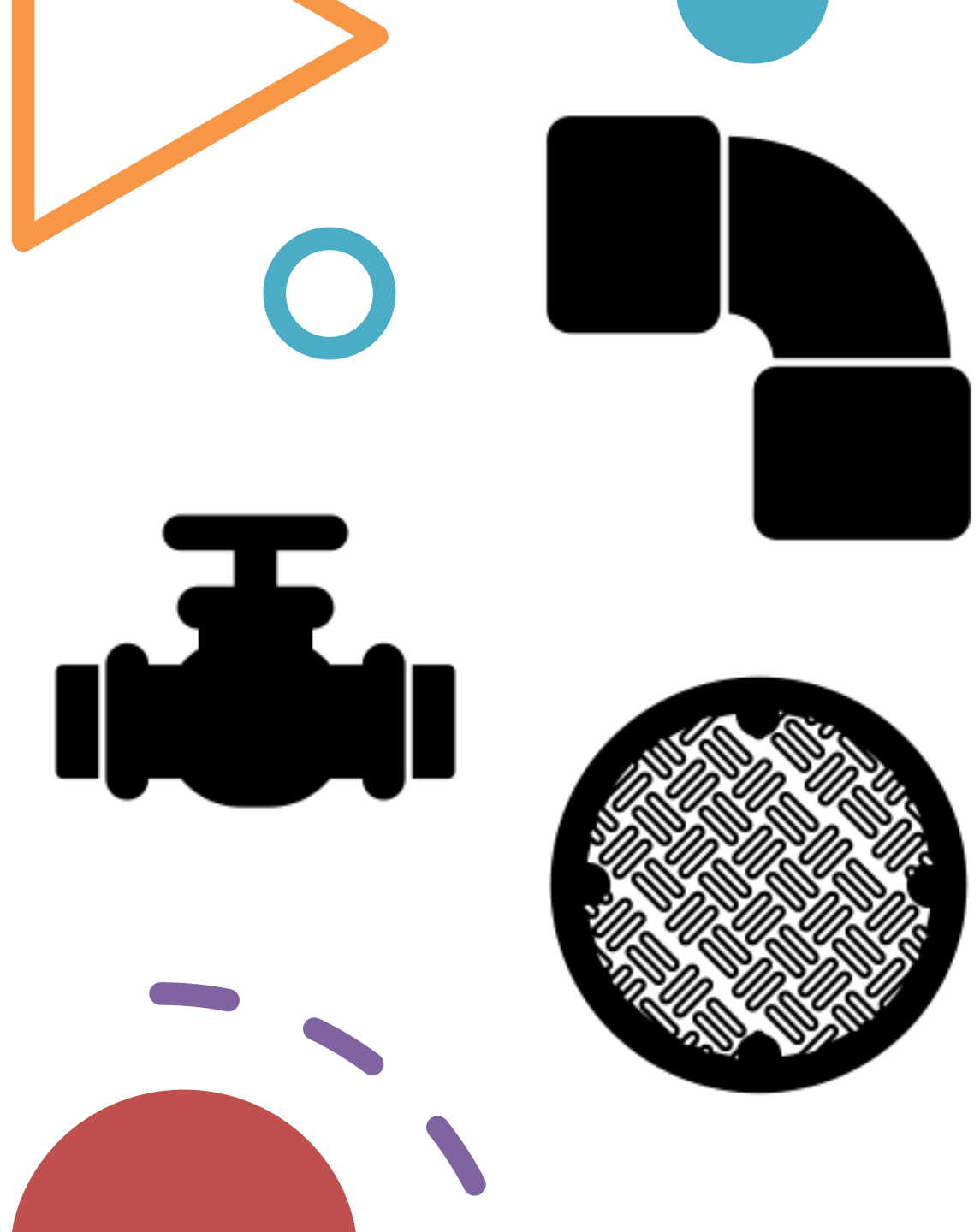
Asset Lifecycle



Asset =

Plant, equipment, buildings, property, pipelines, infrastructure and other items that have potential or actual value to the organization.

- Typically broken into Qualifying and Non-Qualifying
- Includes non-physical items such as water rights, property ownership, and data



Creating GIS Data

- Field Updates



- Projects



- Engineering drawings



Types of Assets

Horizontal

- Distribution and Collection Systems
 - Pipes, manholes, meters, etc.



Vertical

- Treatment and Pump/Lift Stations
 - Motors, MCCs, SCADA, etc.

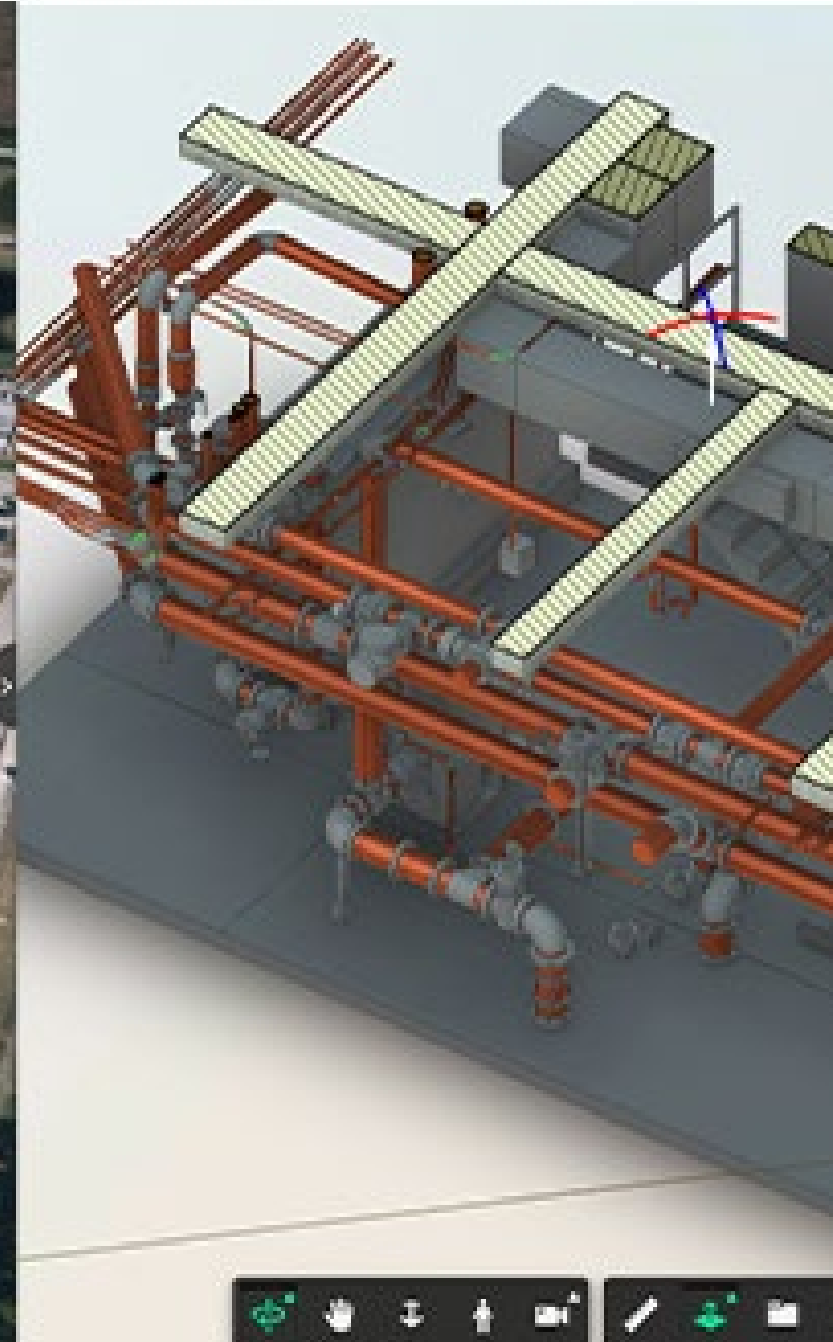


VERTICAL



Vertical

- New
- Historically handled through pdfs
- Benefits:
 - One stop shop and source of truth for everyone
 - SCADA
 - Operators
 - Maintenance
 - Design Engineers
 - Links to design drawings, P&IDs, O&M manuals

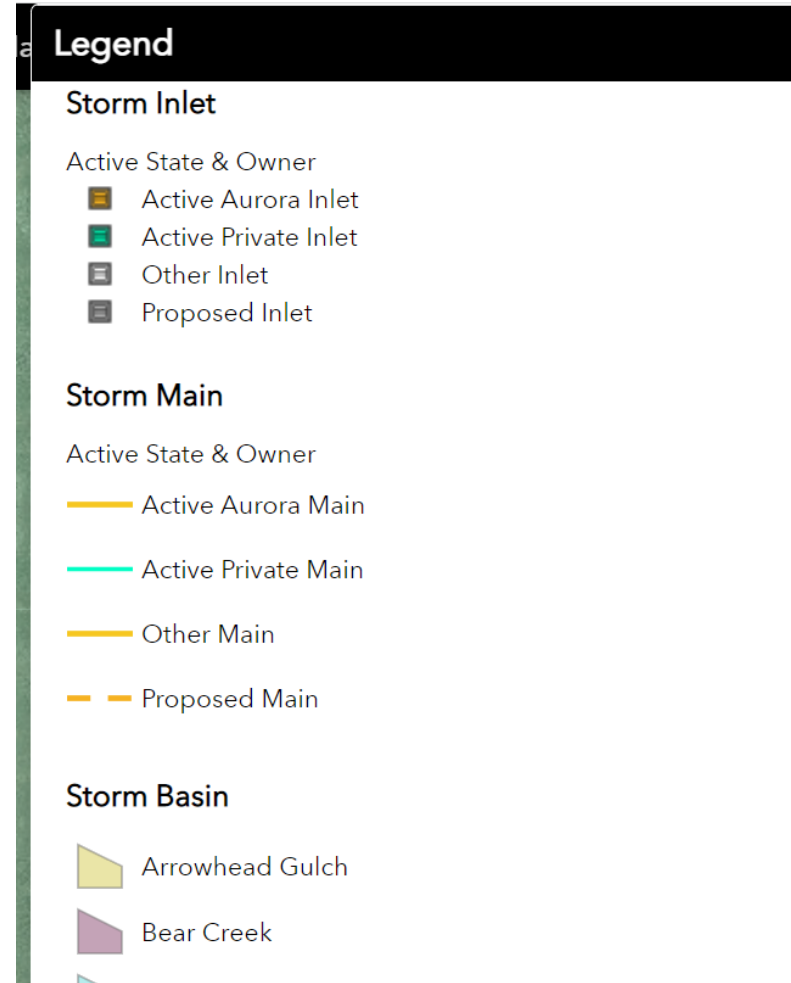


HORIZONTAL



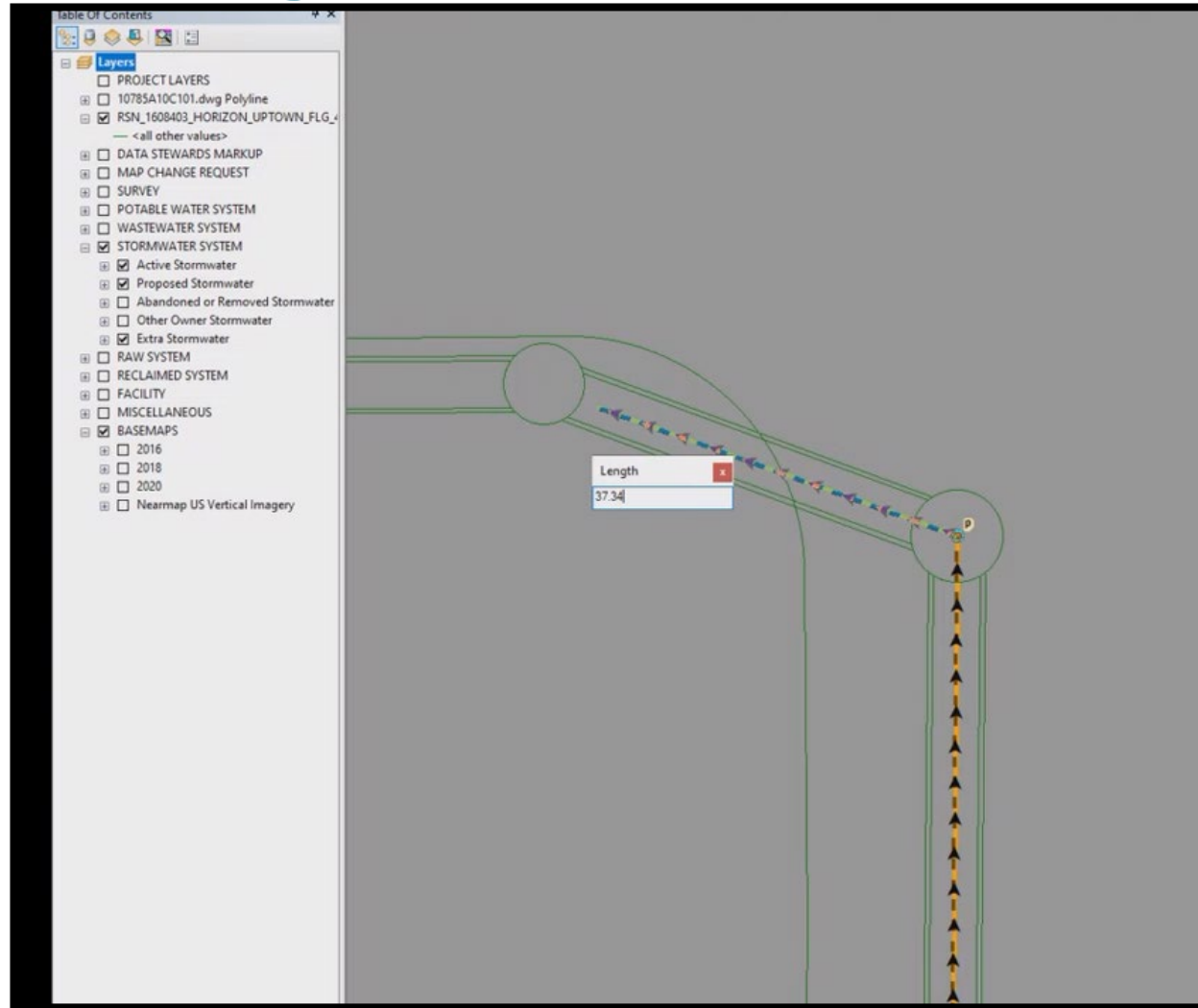
Creating GIS Data

- Spatial
 - Coordinates
 - Projection
- Shapes
 - Points
 - Lines
 - Polygons



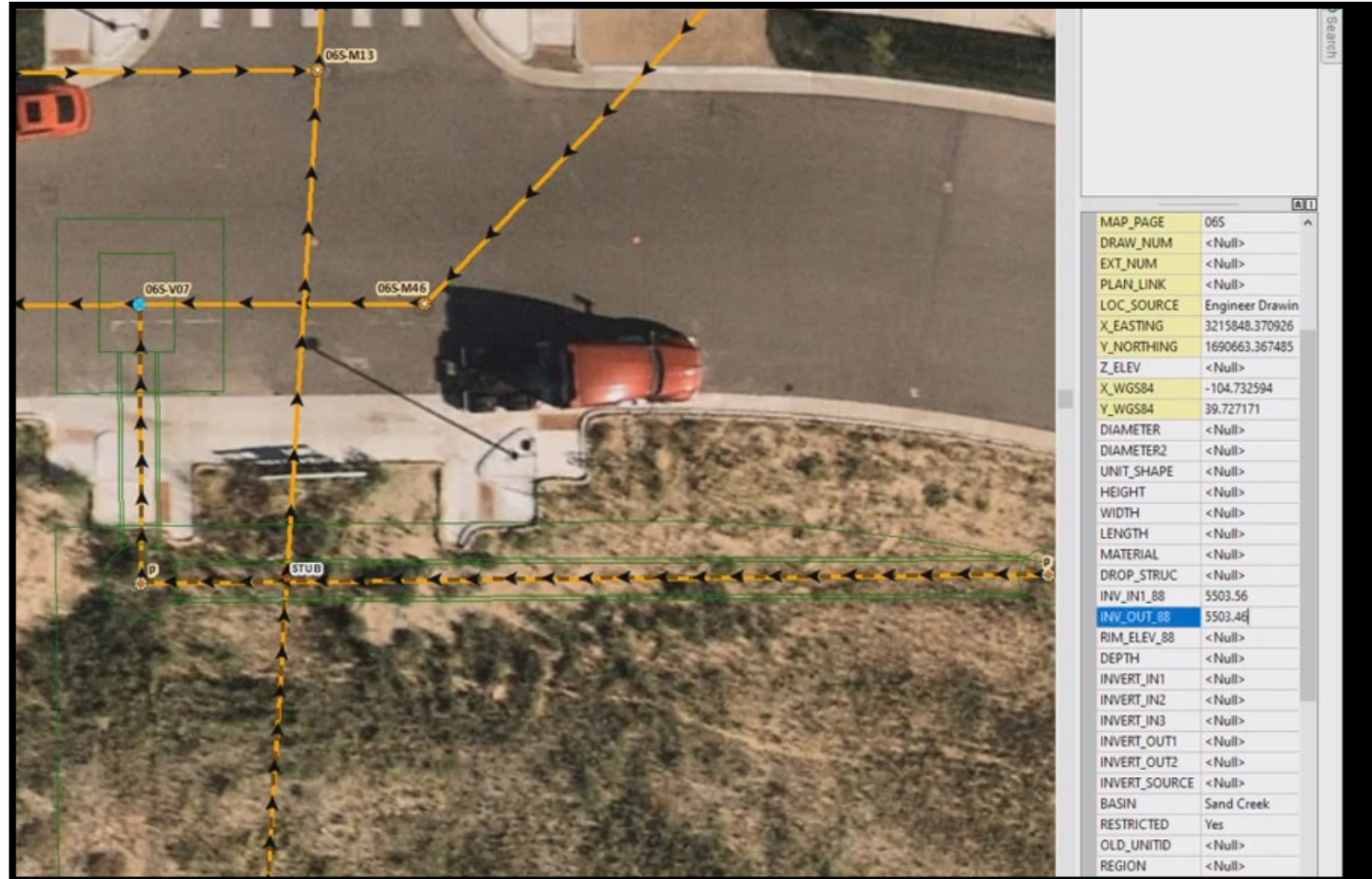
Creating GIS Data

- North Easting
- CAD
- Survey
 - Professional
 - GNSS



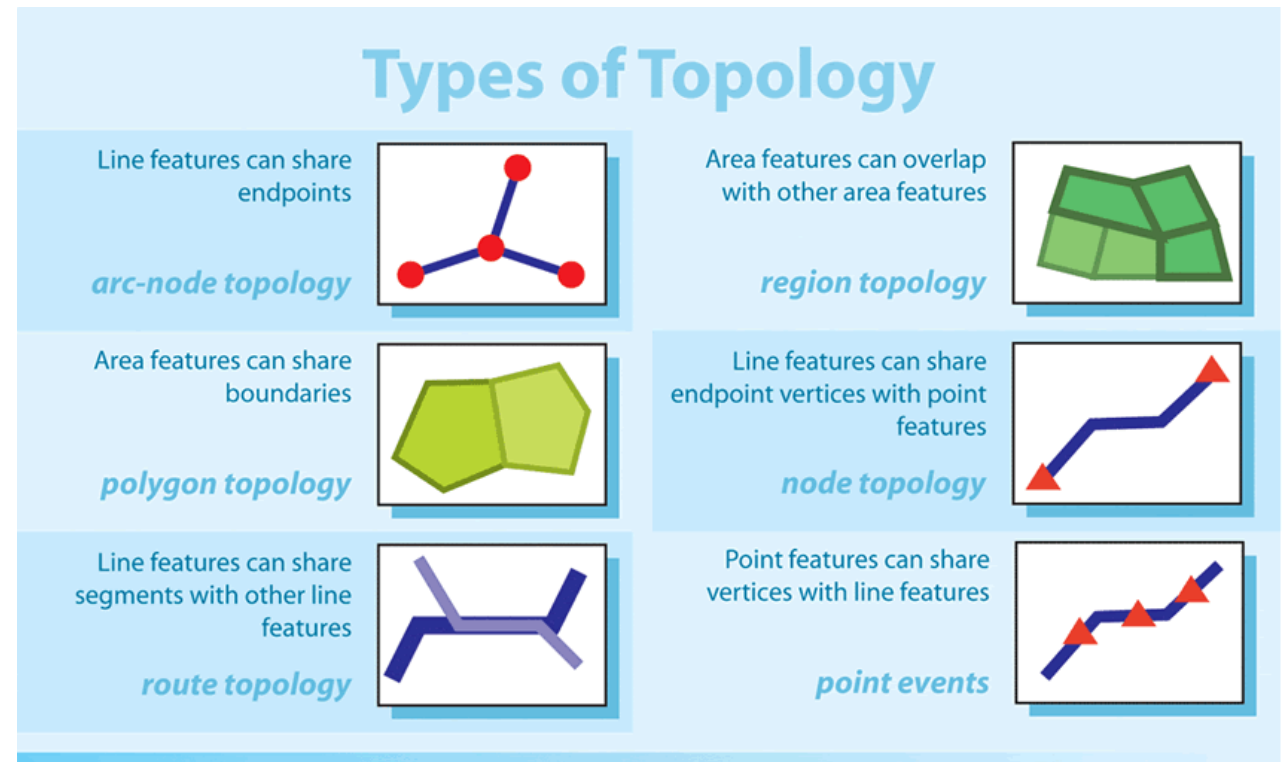
Creating GIS Data

- Attributes
 - Diameter
 - Material
 - Install Date
 - Inverts



Creating GIS Data

- Topology
 - Connection
 - Direction
 - Alignment

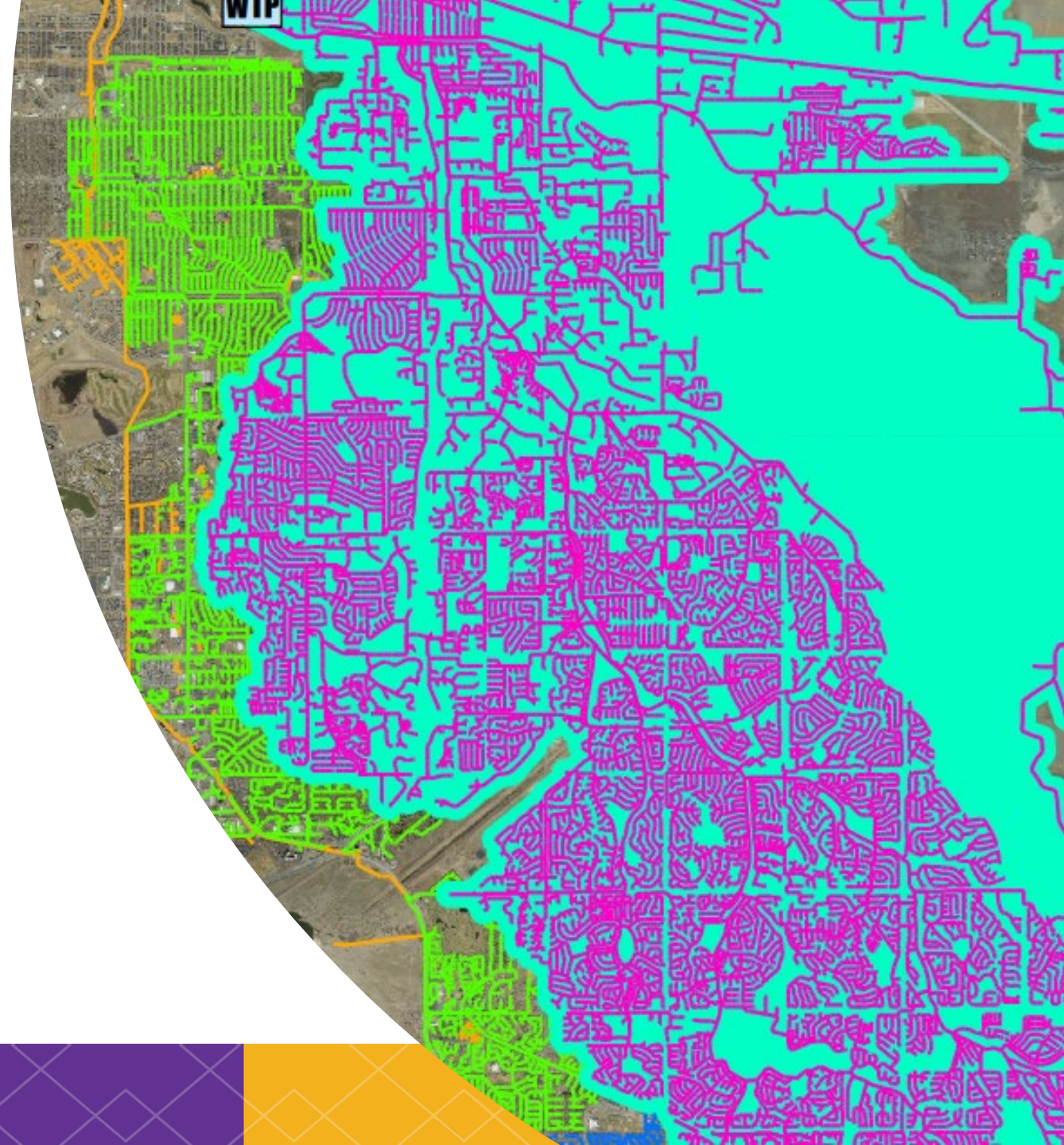


NETWORKS AND MODELING



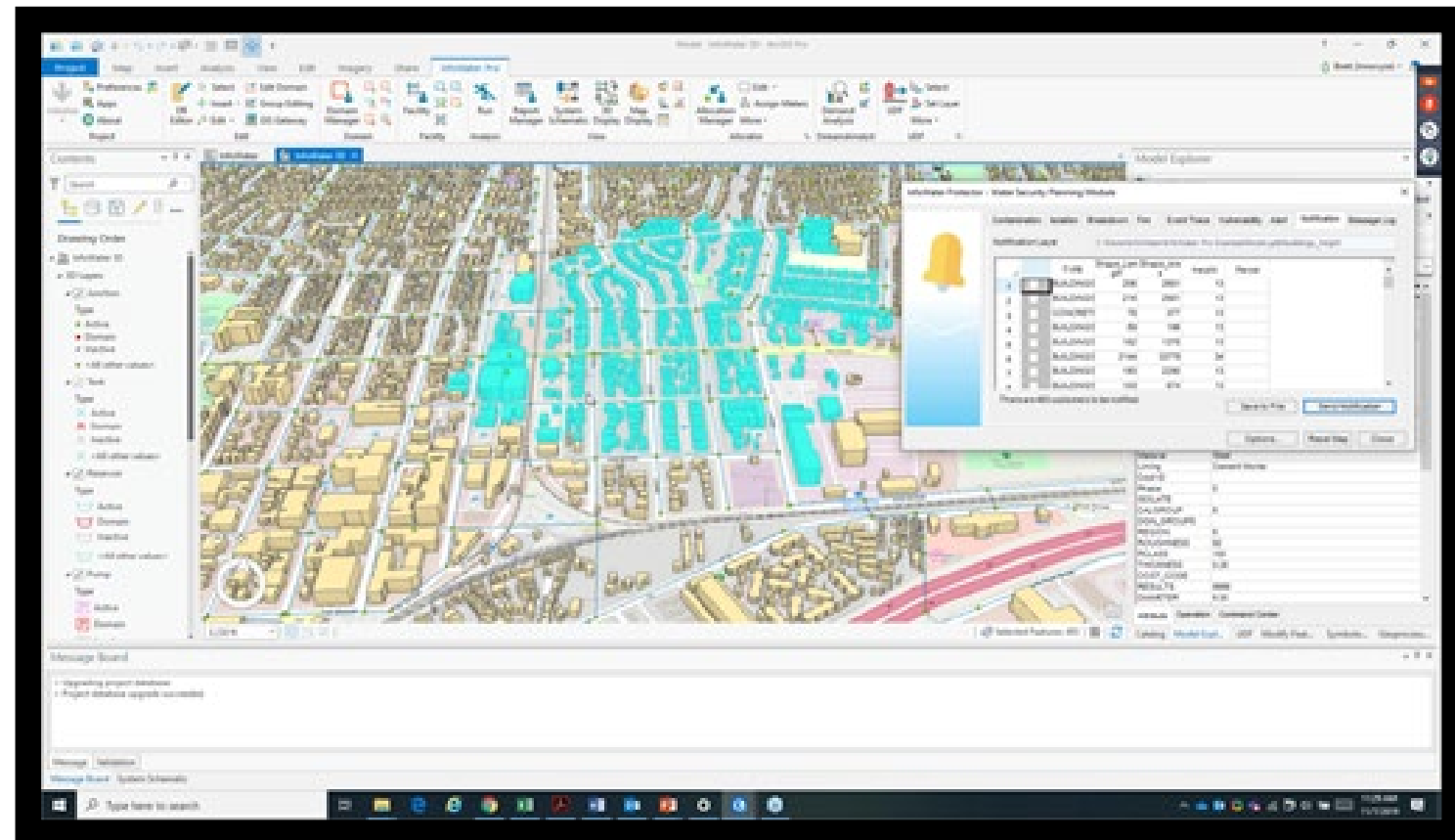
Geometric Network

-
- Topology + Network Rules
 - Allows real world understanding and tracing
 - What is upstream of the SSO?
 - How many people rely on this lift station?
 - Requires GIS license and hefty computer



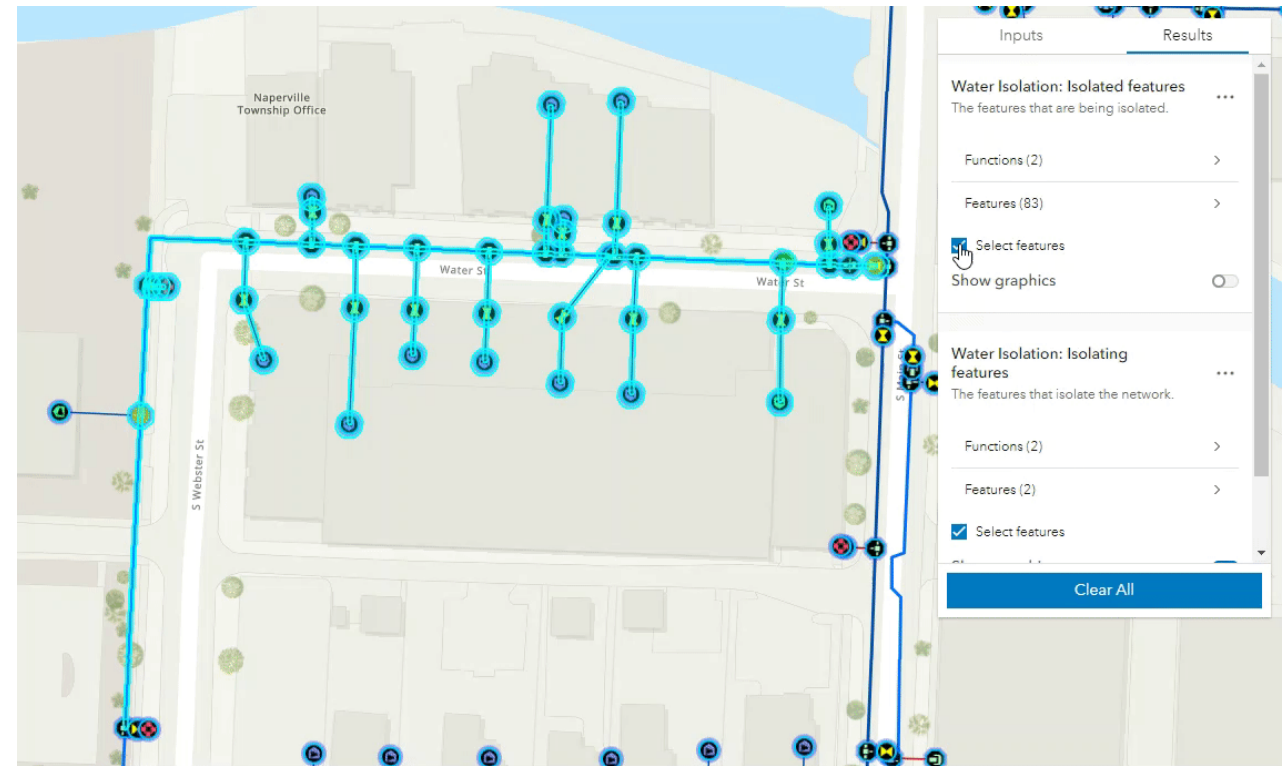
Hydraulic Models

- Mathematical model that allows for the simulation of real-world situations
 - New Developments
 - Pipe breaks
- Requires Hydraulic Modeling license and hefty computer



Utility Network

- New
- Light hydraulic model based on geometric network framework
- Anyone can run a trace on any device, including mobile, quickly
 - What customers are out of service?
 - What valves do I need to close to isolate this pipe segment?



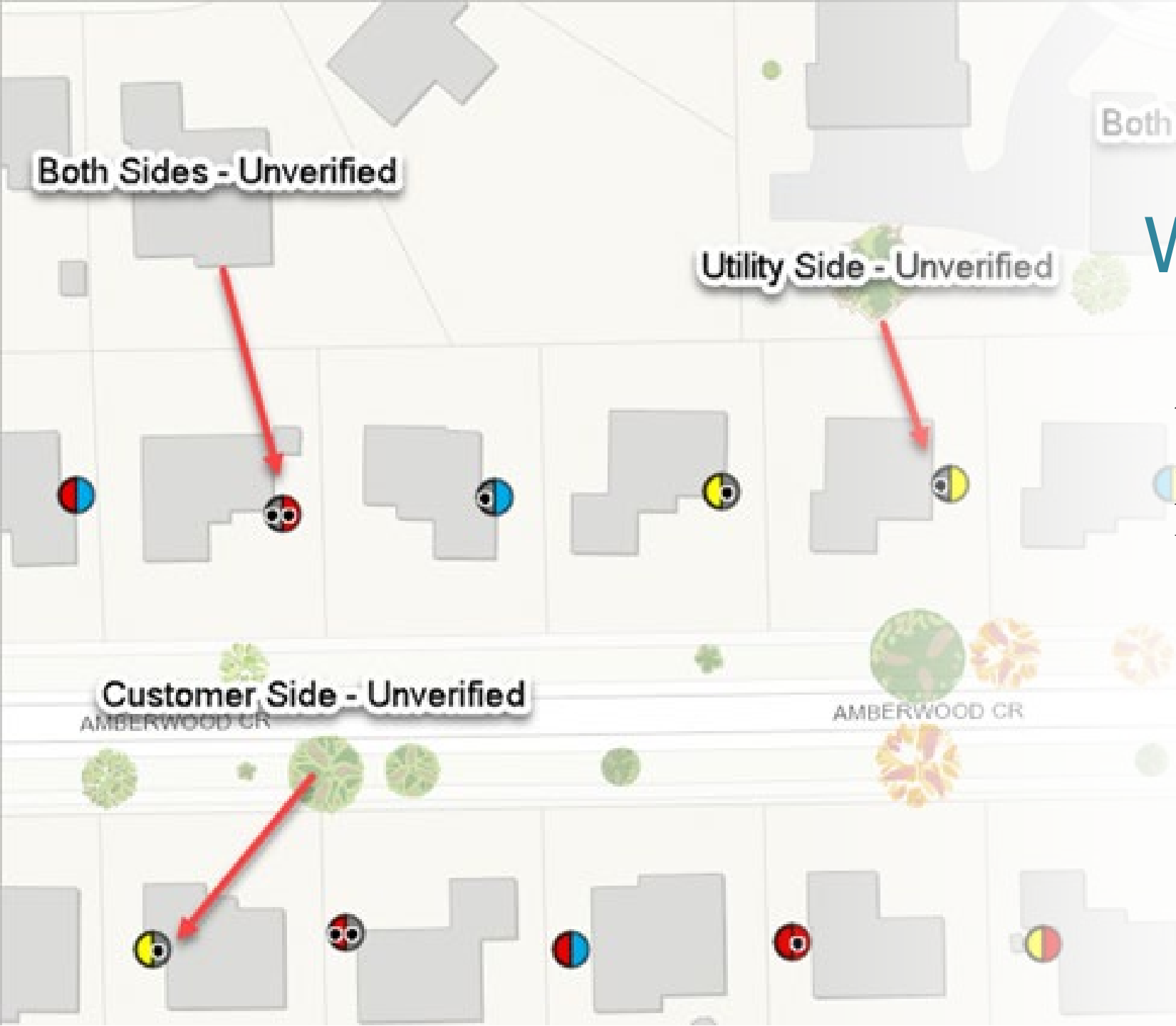
MOBILE AND WEB SOLUTIONS



Mobile and Web Solutions

GIS provides a foundation to quickly create and deploy mobile solutions to help utilities

- Lead Service Line Out of Service
- Water Breaks
- Inspections
 - Hydrants
 - Manholes
- Planning Coordination



WHAT'S NEXT?



Augmented Reality



<https://www.esri.com/about/newsroom/arcnews/mixing-the-real-with-the-virtual/>

Real Time Awareness

Filter 1/1/2018

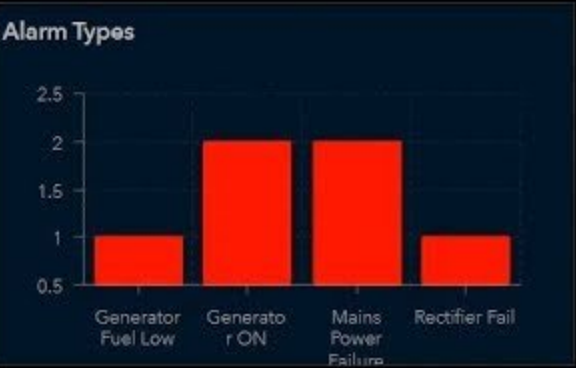
15/15/2018



6 Alarm(s)

Last update: an hour ago

- Alarm List**
- Cell Site 214
Generator Fuel Low - Physical Violation at 6/26/2014, 11:11 AM
 - Cell Site 591
Generator ON - Processing Error Alarm at 6/26/2014, 11:11 AM
 - Cell Site 7888
Generator ON - Integrity Violation at 6/26/2014, 11:11 AM



Mobile Customers

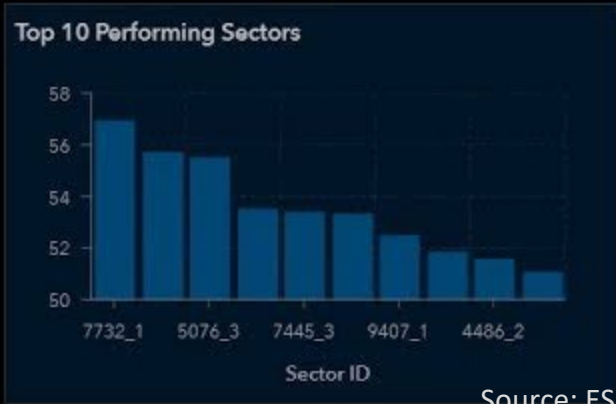
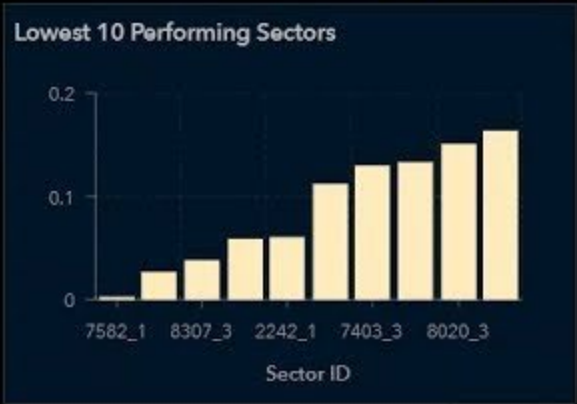
58,369

without service

Business Customers

5,133

without service



Field Technicians

- Randy Frantz is Working
Last Updated on 2/4/2018, 6:34 AM
- Tyler West is Not Working
Last Updated on 2/5/2018, 11:57 PM
- Patrick Huls is Not Working
Last Updated on 2/4/2018, 6:34 AM
- Greg Hunt is Not Working
Last update: a few seconds ago

Work Orders

- Work Order 42466
Assigned as of 2/4/2018, 9:24 AM
- Work Order 12345
In Progress as of 2/4/2018, 5:43 AM
- Work Order 633463
Completed as of 2/4/2018, 9:29 AM
- Work Order 12345
Last update: an hour ago

Damage Assessments

10 Report(s)

Last update: a few seconds ago

1 of 10

Report Information

Work Order ID:

Asset Type: Pole

Asset ID:

Asset Condition: Pole Down

Hazard Type:

Recommendation: Need New CATV Pole

Comments:

Additional Pole Information

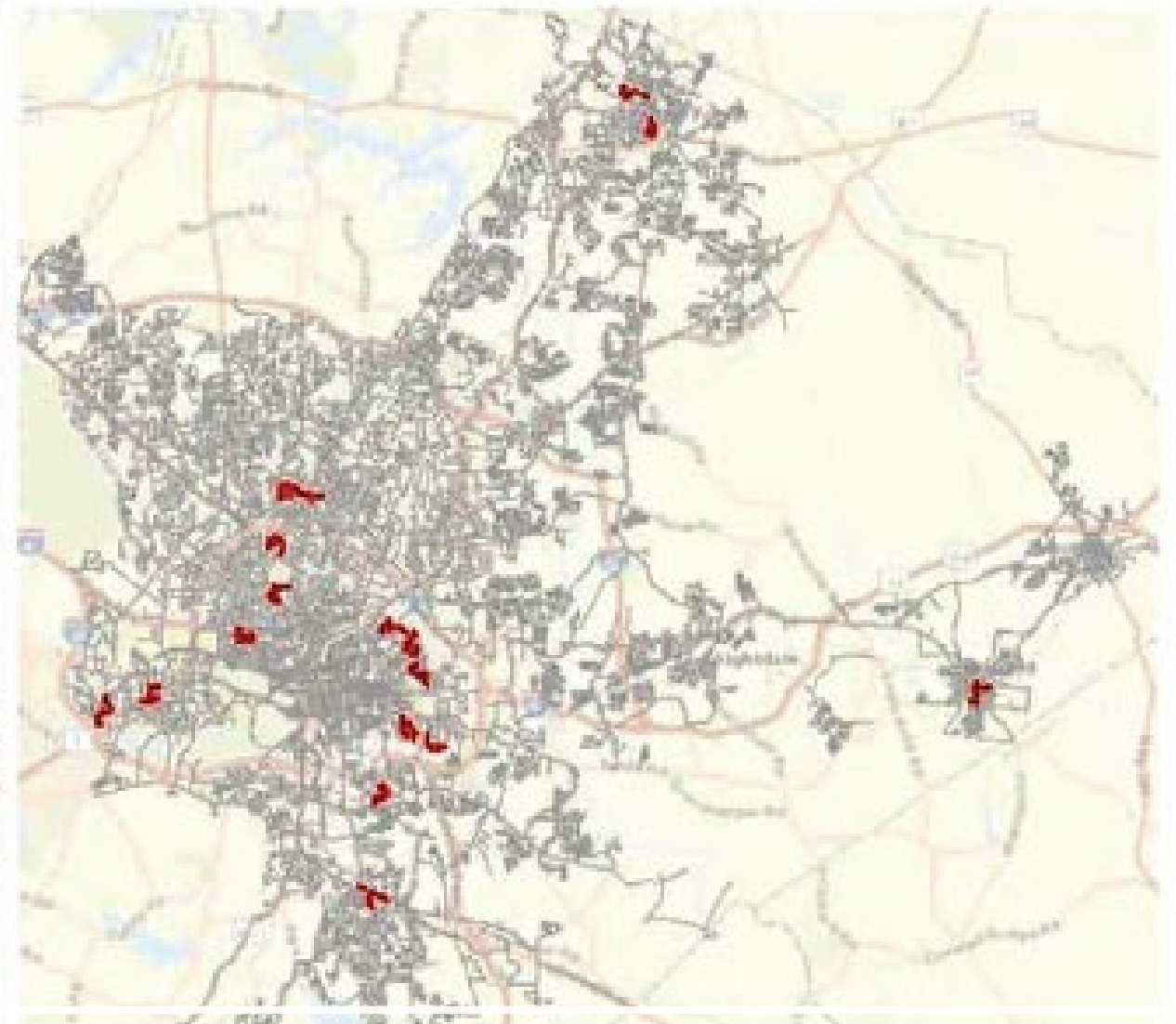
Number of Poles: 1



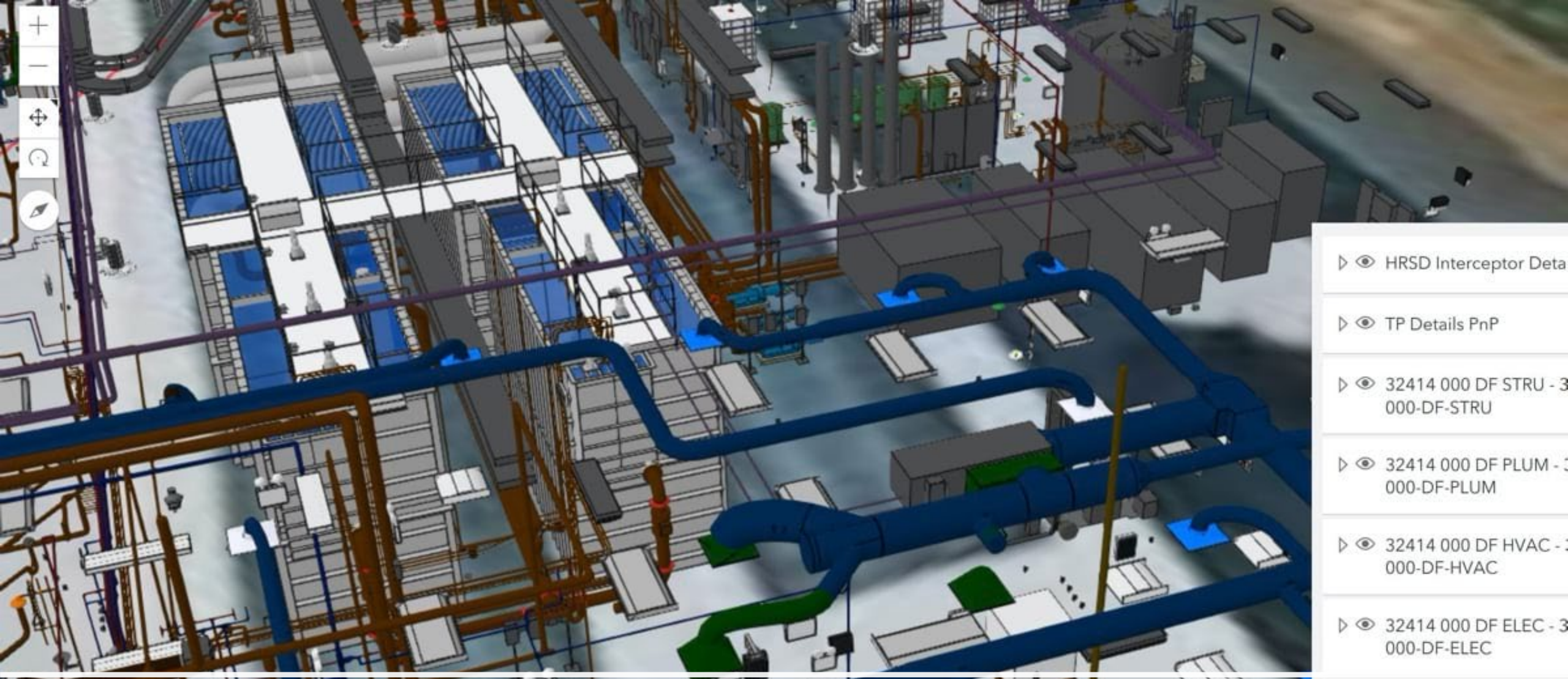
Current Connections

384,721

Devices



Predictive Analytic



▷ 👁 HRSD Interceptor Deta

▷ 👁 TP Details PnP

▷ 👁 32414 000 DF STRU - 3
000-DF-STRU

▷ 👁 32414 000 DF PLUM - 3
000-DF-PLUM

▷ 👁 32414 000 DF HVAC - 3
000-DF-HVAC

▷ 👁 32414 000 DF ELEC - 3
000-DF-ELEC

▷ 👁 32414 000 DF ARCH - 3
000-DF-ARCH

▷ 👁 32414 000 DF ARCH F
32414-000-DF-ARCH F

▷ 👁 32414 000 DF MECH -

Vertical Integration

Standardization

- Quick to spin up solutions
- Low tech background

• If no street is nearby, == UNITID

TO_STREET: **required**

- Street at or near end point of channel segment
- Determined based on labels in engineering drawing and/or street information in GIS
- If no street is nearby, == UNITID2

UNITTYPE: **required**

- Channel type
- Domain AW_StormChannel_Ty: Creek, Channel, Other
 - By default, a segment = Creek
 - Once any assets or other improvements are made along a segment, = Channel
- Determined by the presence of assets or other improvements along a segment; once an EA is received that involves work on a segment it becomes a Channel

MATERIAL: **required**

- Material of which the channel bottom is constructed
- Domain AW_StormChannel_MAT: Earth, Concrete, Other
- Determined from engineering drawing
 - Updated/changed based on AW staff knowledge or Map Change Request (MCR)

LENGTH: **required**

Utility network for municipal utility serving gas and water

Water domain network

WaterDevice

WaterLine

WaterJunction

WaterAssembly

WaterSubnetLine

Gas domain network

GasDevice

GasLine

GasJunction

GasAssembly

GasSubnetLine

Structure network

StructureJunction

StructureLine

StructureBoundary



AURORA
WATER

Melissa Grove

Aurora Water

mgrove@auroragov.org

QUESTIONS?

